



Craig Latimer
**Supervisor
of Elections**

Early Voting 100 Ft. No Solicitation Zone

Riverview Branch Library

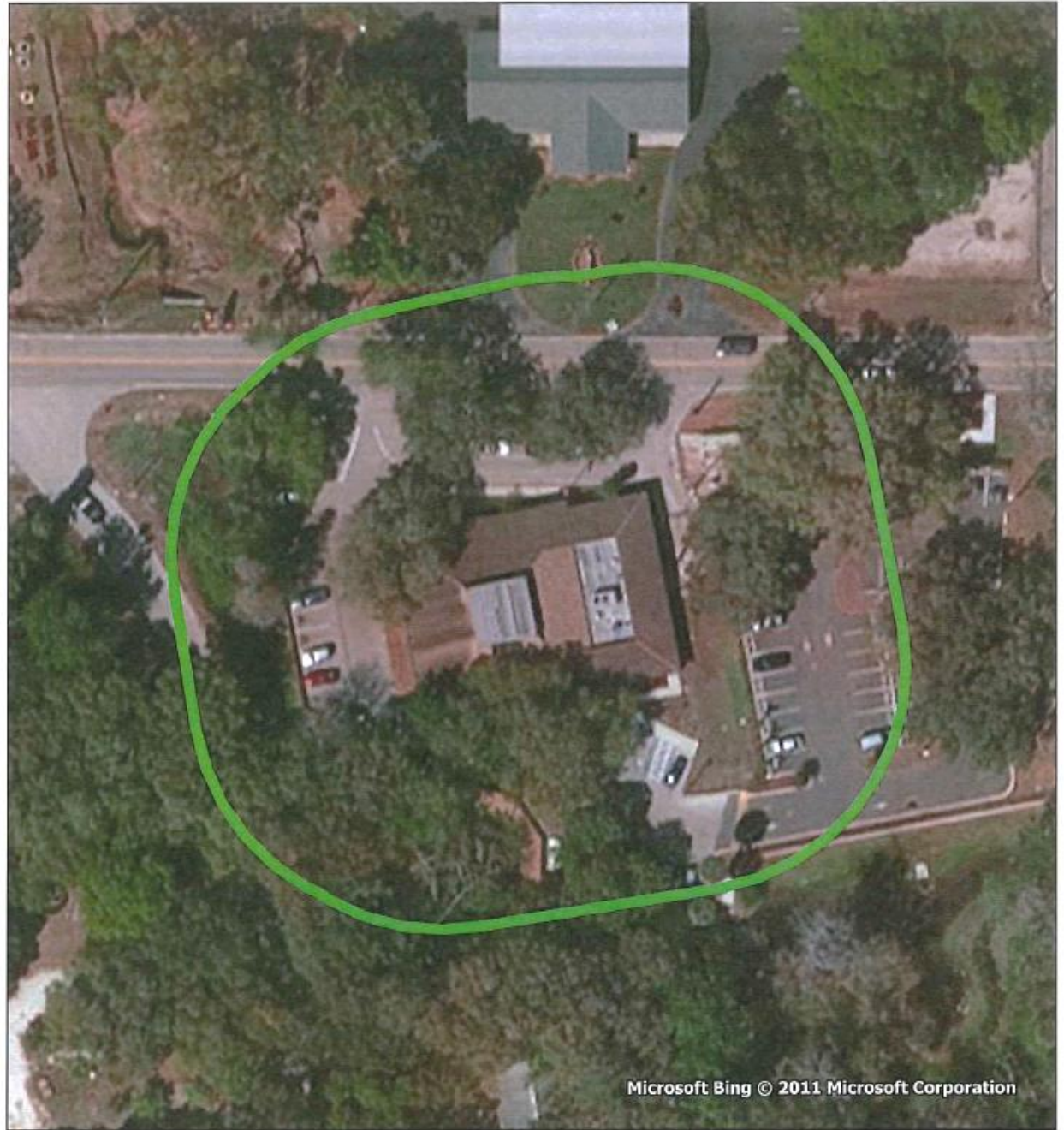
10509 Riverview Drive
Riverview, FL 33569

[F.S. 97.021 and 102.031(4)(a)]

97.021 Definitions. — (10) “Early voting site” means those locations specified in s. 101.657 and the building in which early voting occurs.

102.031 Maintenance of good order at polls; authorities; persons allowed in polling rooms and early voting areas; unlawful solicitation of voters—(4)(a) No person, political committee, or other group or organization may solicit voters inside the polling place or within 100 feet of the entrance to any polling place, a polling room where the polling place is also a polling room, an early voting site, or an office of the supervisor of elections where absentee ballots are requested and printed on demand for the convenience of electors who appear in person to request them. Before the opening of the polling place or early voting site, the clerk or supervisor shall designate the no-solicitation zone and mark the boundaries.

Disclaimer: Image represents the approximate location of the 100 foot mark.



Microsoft Bing © 2011 Microsoft Corporation